

Antibodies Recognising Leucocyte Antigens

HUMAN REAGENTS

HUMAN REAGENTS

Serotec's range of research antibodies to human antigens includes probably the widest commercially available selection of antibody reagents recognising Human CD's. Most of our antibodies, some of which are unique, are available in a choice of conjugates and formats including our new AlexaFluor® 405, 488 and 647 fluorochromes.

We are also pleased to announce the introduction of our serotec FL range of diagnostic antibodies for detecting leukaemias and lymphomas by flow cytometry (not available in the USA).

Remember...

We introduce over 500 new products each year. If you do not see the antibody you are looking for here or on our website, we'll try to find it for you with our Antibody Location Service.

If you do not see the conjugate you are looking for, or would like a conjugate for an in-house antibody, we'll try to make it for you.

It is easy to stay up to date with the latest Serotec antibodies in your interest area. Just subscribe to our email updates through our website or by contacting any Serotec office.

Antibodies Recognising Leucocyte Antigens

BB-1

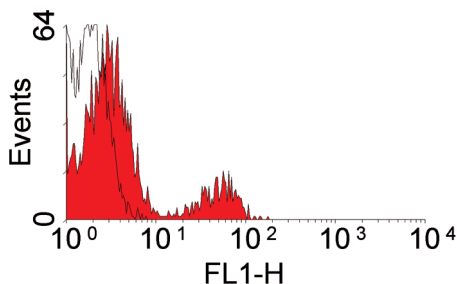
BB-1 Clone Mouse IgM

Format	Quantity	Applications	Product Code	Price
FITC	100 Tests	F	MCA1132F	O
Purified	0.2mg	C, F	MCA1132	S

B-CELLS (FMC7 ANTIGEN)

FMC7 Clone Mouse IgM

Format	Quantity	Applications	Product Code	Price
FITC	100 Tests	F	MCA792F	U

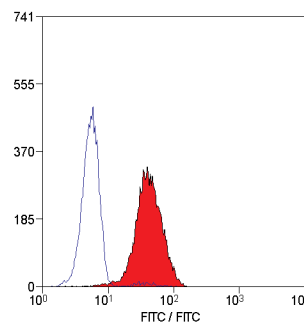


Staining of human peripheral blood lymphocytes with MOUSE ANTI HUMAN B-CELLS (FMC7):FITC (MCA792F).

BLTR LEUKOTRIENE B4 RECEPTOR

202/7B1 Clone Mouse IgG2a

Format	Quantity	Applications	Product Code	Price
Alexa Fluor® 647 NEW	100 Tests	F	MCA2108A647	T
Azide free	1.0mg	C, F	MCA2108XZ	Z
Biotin	0.1mg	F	MCA2108B	O
FITC	0.1mg	F	MCA2108F	O
Purified	0.1mg	C, F	MCA2108GA	J
Purified	0.2mg	C, F	MCA2108	S



Staining of human peripheral blood granulocytes with MOUSE ANTI HUMAN BLTR (MCA2108).

Our simple quality promise - If a Serotec antibody does not perform as described on its datasheet we will replace it or credit you for the amount you paid for it.

Antibodies Recognising Leucocyte Antigens

HUMAN REAGENTS

CALCITONIN RECEPTOR

31/01 Clone Mouse IgG2a

Format	Quantity	Applications	Product Code	Price
Purified	0.1mg	E, P	MCA2191	S

CATHEPSIN B

Sheep Polyclonal

Format	Quantity	Applications	Product Code	Price
Purified	1.0ml	ID, WB	AHP18H	L

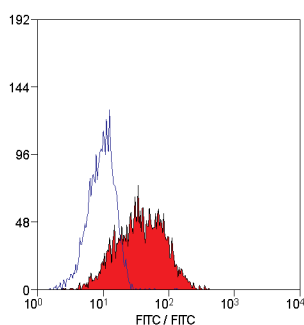
CD1a

NA1/34 Clone Mouse IgG2a

Format	Quantity	Applications	Product Code	Price
Alexa Fluor® 488 <small>NEW</small>	100 Tests	F	MCA80A488	T
Alexa Fluor® 647 <small>NEW</small>	100 Tests	F	MCA80A647	T
Azide free	1.0mg	C, F	MCA80XZ	Z
Biotin	0.1mg	F	MCA80B	N
FITC	0.1mg	F	MCA80F	N
Purified	0.1mg	C, F	MCA80GA	J
Purified	0.2mg	C, F	MCA80	Q
RPE	100 Tests	F	MCA80PE	T

O10 Clone Mouse IgG1

Format	Quantity	Applications	Product Code	Price
Ready to use	1.0ml	C, P*	MCA1657T	E
Ready to use	6.0ml	C, P*	MCA1657	Q



Staining of MOLT 4 cells with MOUSE ANTI HUMAN CD1a:BIOTIN (MCA80B).

CD1b

MT-101 Clone Mouse IgG1

Format	Quantity	Applications	Product Code	Price
FITC	0.1mg	F	MCA1315F	N
Purified	200 Tests	C, F, IP	MCA1315	Q

CD1c

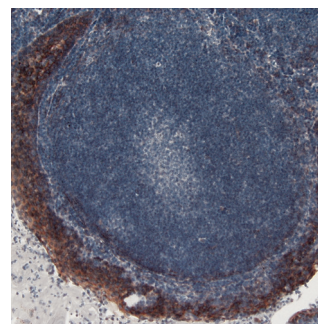
L161 Clone Mouse IgG1

Format	Quantity	Applications	Product Code	Price
Purified	0.2mg	C, F, IP	MCA694	S

CD1d

NOR3.2 Clone Mouse IgG1

Format	Quantity	Applications	Product Code	Price
Purified	0.2mg	C, IP, P*	MCA982G	S
S/N	2.0ml	C, IP, P*	MCA982	Q



Photomicrograph of human thymus stained with MCA982 and visualized using Serotec's STAR2014 staining kit.

CD2 LFA-2, E-ROSETTE RECEPTOR

AB75 Clone Mouse IgG1

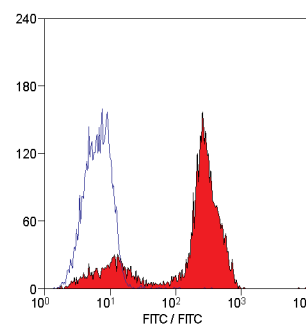
Format	Quantity	Applications	Product Code	Price
S/N	0.1ml	P*	MCA1802T	E
S/N	1.0ml	P*	MCA1802	Z

LT2 Clone Mouse IgG2b

Format	Quantity	Applications	Product Code	Price
Alexa Fluor® 647 <small>NEW</small>	100 Tests	F	MCA1194A647	T
Azide free	1.0mg	C, F, IP, FN	MCA1194XZ	Z
Biotin	0.1mg	F	MCA1194B	N
FITC	0.1mg	F	MCA1194F	N
Purified	0.1mg	C, F, IP	MCA1194GA	J
Purified	0.2mg	C, F, IP	MCA1194	Q
RPE	100 Tests	F	MCA1194PE	T

S5.5 Clone Mouse IgG2a

Format	Quantity	Applications	Product Code	Price
RPE-CY5	100 Tests	F	MCA2241C	T



Staining of human peripheral blood lymphocytes with MOUSE ANTI HUMAN CD2 (MCA1194).

All Products are for research purposes only, not for therapeutic or diagnostic use.

www.serotec.com For contact details see back cover

Antibodies Recognising Leucocyte Antigens

HUMAN REAGENTS

CD3 T CELL RECEPTOR COMPLEX, TCR

MEM-57 Clone Mouse IgG2a

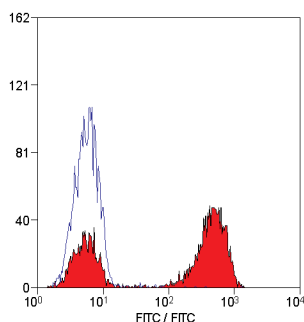
Format	Quantity	Applications	Product Code	Price
FITC	0.1mg	F	MCA2184F	N

S4.1 Clone Mouse IgG2a

Format	Quantity	Applications	Product Code	Price
PE-TR	50 Tests	F	MCA1711PETR	Q
RPE-CY5	100 Tests	F	MCA1711C	T

UCHT1 Clone Mouse IgG1

Format	Quantity	Applications	Product Code	Price
Alexa Fluor® 405 NEW	100 Tests	F	MCA463A405	X
Alexa Fluor® 488 NEW	100 Tests	F	MCA463A488	T
Alexa Fluor® 647 NEW	100 Tests	F	MCA463A647	T
APC	100 Tests	F	MCA463APC	T
Azide free	1.0mg	C, F	MCA463XZ	Z
Biotin	0.1mg	F	MCA463B	N
FITC	0.1mg	F	MCA463F	N
Low Endotoxin NEW	0.5mg	C, F	MCA463EL	X
Purified	0.2mg	C, F	MCA463G	Q
RPE	100 Tests	F	MCA463PE	T
S/N	2.0ml	C, F	MCA463	Q



Staining of human peripheral blood lymphocytes with MOUSE ANTI HUMAN CD3 (MCA463).

CD3 EPSILON (T3) T CELL RECEPTOR COMPLEX, TCR

CD3-12 Clone Rat IgG1

Format	Quantity	Applications	Product Code	Price
Purified	0.02mg	C, F*, P*	MCA1477T	C
Purified	0.2mg	C, F*, P*, WB	MCA1477	S

CD4 T4

1F6 Clone Mouse IgG1

Format	Quantity	Applications	Product Code	Price
S/N	0.1ml	P*, WB	MCA1803T	E
S/N	1.0ml	P*, WB	MCA1803	Z

7E14 Clone Mouse IgG1

Format	Quantity	Applications	Product Code	Price
RPE	100 Tests	F	MCA2072PE	T

RPA-T4 Clone Mouse IgG1

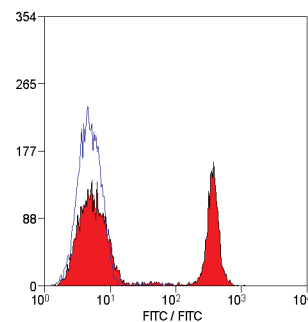
Format	Quantity	Applications	Product Code	Price
Alexa Fluor® 405 NEW	100 Tests	F	MCA1267A405	X
Alexa Fluor® 488 NEW	100 Tests	F	MCA1267A488	T
Alexa Fluor® 647 NEW	100 Tests	F	MCA1267A647	T
APC NEW	100 Tests	F	MCA1267APC	T
Azide free	1.0mg	C, F	MCA1267XZ	Z
Biotin	0.1mg	F	MCA1267B	N
FITC	0.1mg	F	MCA1267F	N
Purified	0.1mg	C, F	MCA1267GA	J
Purified	0.2mg	C, F	MCA1267	Q
RPE	100 Tests	F	MCA1267PE	T

S3.5 Clone Mouse IgG2a

Format	Quantity	Applications	Product Code	Price
PE-TR	50 Tests	F	MCA1565PETR	Q
RPE-CY5	100 Tests	F	MCA1565C	T

YNB46.1.8 Clone Rat IgG1

Format	Quantity	Applications	Product Code	Price
Purified NEW	0.2mg	F	MCA484G	Q



Staining of human peripheral blood lymphocytes with MOUSE ANTI HUMAN CD4 (MCA1267).

Our simple quality promise - If a Serotec antibody does not perform as described on its datasheet we will replace it or credit you for the amount you paid for it.

Antibodies Recognising Leucocyte Antigens

CD5

4C7 Clone Mouse IgG1

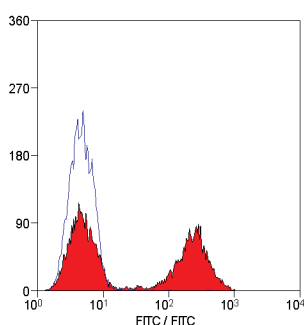
Format	Quantity	Applications	Product Code	Price
S/N	0.1ml	P*, WB	MCA1804T	E
S/N	1.0ml	P*, WB	MCA1804	Z

CD5-5D7 Clone Mouse IgG1

Format	Quantity	Applications	Product Code	Price
RPE-CY5	100 Tests	F	MCA1713C	T

MF7-14.5 Clone Mouse IgG2a

Format	Quantity	Applications	Product Code	Price
APC NEW	100 Tests	F	MCA1341APC	T
Azide free	1.0mg	C, F, IP	MCA1341XZ	Z
Biotin	0.1mg	F	MCA1341B	N
FITC	0.1mg	F	MCA1341F	N
Purified	200 Tests	C, F, IP	MCA1341	Q
RPE	100 Tests	F	MCA1341PE	T

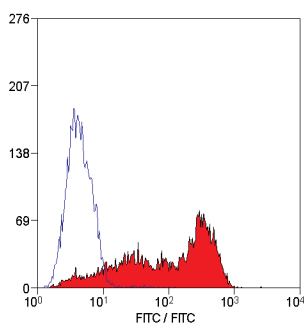


Staining of human peripheral blood lymphocytes with MOUSE ANTI HUMAN CD5 (MCA1341).

CD6

MEM-98 Clone Mouse IgG1

Format	Quantity	Applications	Product Code	Price
FITC	0.1mg	F	MCA1880F	N
Purified	0.1mg	F, IP, WB	MCA1880GA	J
Purified	0.2mg	F, IP, WB	MCA1880	Q
RPE	100 Tests	F	MCA1880PE	T



Staining of human peripheral blood lymphocytes with MOUSE ANTI HUMAN CD6 (MCA1880).

CD7

CD7-6B7 Clone Mouse IgG2a

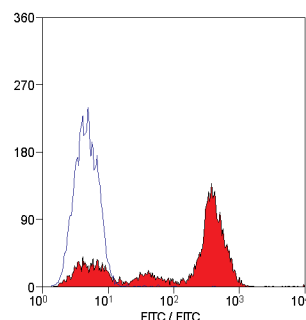
Format	Quantity	Applications	Product Code	Price
RPE	100 Tests	F	MCA1566PE	T
RPE-CY5	100 Tests	F	MCA1566C	T

LT7 Clone Mouse IgG2a

Format	Quantity	Applications	Product Code	Price
Biotin	0.1mg	F	MCA1197B	N
FITC	100 Tests	F	MCA1197F	N
Purified	0.1mg	C, F	MCA1197GA	J
Purified	0.2mg	C, F	MCA1197	Q

YTH30.15 Clone Rat IgG2b

Format	Quantity	Applications	Product Code	Price
Purified	200 Tests	F	MCA344	Q



Staining of human peripheral blood lymphocytes with MOUSE ANTI HUMAN CD7 (MCA1197).

All Products are for research purposes only, not for therapeutic or diagnostic use.

www.serotec.com For contact details see back cover

Antibodies Recognising Leucocyte Antigens

CD8 T8

3B5 Clone Mouse IgG2a

Format	Quantity	Applications	Product Code	Price
PE-TR	50 Tests	F	MCA1714PETR	Q
RPE-CY5	100 Tests	F	MCA1714C	T

4B11 Clone Mouse IgG2b

Format	Quantity	Applications	Product Code	Price
S/N	0.1ml	C, P*	MCA1817T	E
S/N	1.0ml	C, P*, WB	MCA1817	Z

LT8 Clone Mouse IgG1

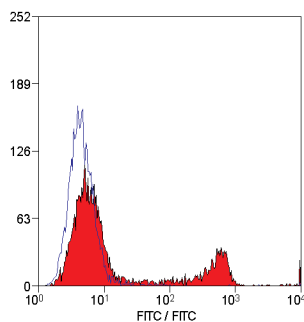
Format	Quantity	Applications	Product Code	Price
Alexa Fluor® 405 NEW	100 Tests	F	MCA1226A405	X
Alexa Fluor® 488 NEW	100 Tests	F	MCA1226A488	T
Alexa Fluor® 647 NEW	100 Tests	F	MCA1226A647	T
Azide free	1.0mg	C, F, IP	MCA1226XZ	Z
Biotin	0.1mg	F	MCA1226B	N
FITC	0.1mg	F	MCA1226F	N
Purified	0.1mg	C, F, IP	MCA1226GA	J
Purified	0.2mg	C, F, IP	MCA1226	Q
RPE	100 Tests	F	MCA1226PE	T

YTC141.1HL Clone Rat IgG2b

Format	Quantity	Applications	Product Code	Price
Ig FRACTION	200 Tests	F	MCA352	Q

YTC182.20 Clone Rat IgG2b

Format	Quantity	Applications	Product Code	Price
FITC	100 Tests	F	MCA351F	N
Ig FRACTION	200 Tests	C, F	MCA351	Q



Staining of human peripheral blood lymphocytes with RAT ANTI HUMAN CD8 (MCA351).

CD8 BETA

2ST8.5H7 Clone Mouse IgG2a

Format	Quantity	Applications	Product Code	Price
Purified	0.2mg	F, IP	MCA1723	S

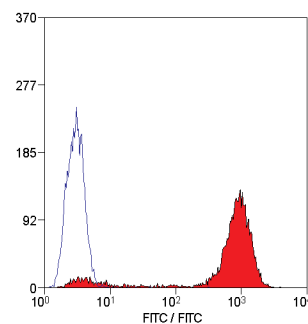
CD9 MRP-1

72F6 Clone Mouse IgG1

Format	Quantity	Applications	Product Code	Price
S/N NEW	0.1ml	C, P*	MCA1805T	E
S/N	1.0ml	C, P*	MCA1805	Z

MM2/57 Clone Mouse IgG2b

Format	Quantity	Applications	Product Code	Price
Biotin	0.1mg	F	MCA469B	N
FITC	0.1mg	F	MCA469F	N
Purified	0.1mg	F	MCA469GA	J
Purified	0.2mg	F	MCA469G	Q
RPE	100 Tests	F	MCA469PE	T
S/N	2.0ml	F	MCA469S	Q



Staining of human peripheral blood platelets with MOUSE ANTI HUMAN CD9:BIOTIN (MCA469B).

Our simple quality promise - If a Serotec antibody does not perform as described on its datasheet we will replace it or credit you for the amount you paid for it.

Antibodies Recognising Leucocyte Antigens

CD10 CALLA

56C6 Clone Mouse IgG1

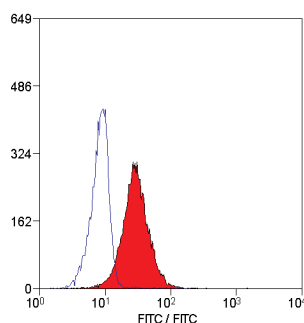
Format	Quantity	Applications	Product Code	Price
Ready to use	6.0ml	C, P*	MCA1806H	N
S/N	0.1ml	C, P*	MCA1806T	E
S/N	1.0ml	C, P*, WB	MCA1806	Z

SJ5-1B4 Clone Mouse IgG1

Format	Quantity	Applications	Product Code	Price
RPE-CY5	100 Tests	F	MCA1567C	T

SN5c Clone Mouse IgG1

Format	Quantity	Applications	Product Code	Price
Alexa Fluor® 488 NEW	100 Tests	F	MCA1556A488	T
APC NEW	100 Tests	F	MCA1556APC	T
Azide free	1.0mg	C, F, IP, WB	MCA1556XZ	Z
Biotin	0.1mg	F	MCA1556B	N
FITC	0.1mg	F	MCA1556F	N
Purified NEW	0.1mg	C, F, IP, WB	MCA1556GA	J
Purified	0.2mg	C, F, IP, WB	MCA1556	Q
RPE	100 Tests	F	MCA1556PE	T

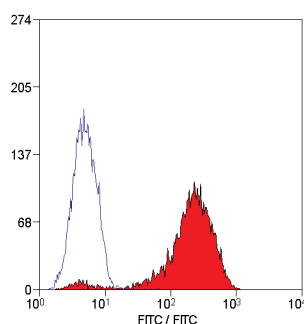


Staining of human peripheral blood granulocytes with MOUSE ANTI HUMAN CD10 (MCA1556).

CD11a INTEGRIN ALPHA L CHAIN, LFA-1

38 Clone Mouse IgG2a

Format	Quantity	Applications	Product Code	Price
Alexa Fluor® 647 NEW	100 Tests	F	MCA1848A647	T
Azide free	1.0mg	C, F, FN, IP	MCA1848XZ	Z
Biotin	0.1mg	F	MCA1848B	N
FITC	0.1mg	F	MCA1848F	N
Purified	0.1mg	C, F, IP	MCA1848GA	J
Purified	0.2mg	C, F, IP	MCA1848	Q
RPE	100 Tests	F	MCA1848PE	T

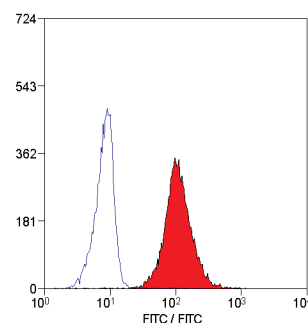


Staining of human peripheral blood lymphocytes with MOUSE ANTI HUMAN CD11a (MCA1848).

CD11b INTEGRIN ALPHA M CHAIN, MAC-1

ICRF44 Clone Mouse IgG1

Format	Quantity	Applications	Product Code	Price
Alexa Fluor® 647 NEW	100 Tests	F	MCA551A647	T
Azide free	1.0mg	C, F, IP	MCA551XZ	Z
Biotin	0.1mg	F	MCA551B	N
FITC	0.1mg	F	MCA551F	N
Purified	0.02mg	C, F	MCA551T	C
Purified	0.1mg	C, F, IP	MCA551GA	J
Purified	0.2mg	C, F, IP	MCA551	Q
RPE	100 Tests	F	MCA551PE	T

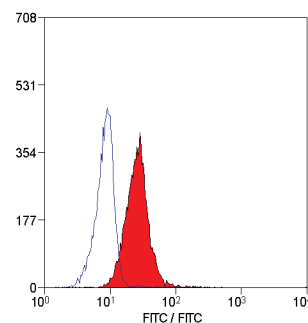


Staining of human peripheral blood granulocytes with MOUSE ANTI HUMAN CD11b (MCA551).

CD11c INTEGRIN ALPHA X CHAIN

BU15 Clone Mouse IgG1

Format	Quantity	Applications	Product Code	Price
Alexa Fluor® 488 NEW	100 Tests	F	MCA2087A488	T
Alexa Fluor® 647 NEW	100 Tests	F	MCA2087A647	T
Azide free	1.0mg	C, F, IP	MCA2087XZ	Z
FITC	0.1mg	F	MCA2087F	N
Purified	0.1mg	C, F, IP	MCA2087GA	J
Purified	0.2mg	C, F, IP	MCA2087	Q
RPE	100 Tests	F	MCA2087PE	T



Staining of human peripheral blood granulocytes with MOUSE ANTI HUMAN CD11c (MCA2087).

All Products are for research purposes only, not for therapeutic or diagnostic use.

www.serotec.com For contact details see back cover

Antibodies Recognising Leucocyte Antigens

CD13 AMINOPEPTIDASE N

TUK1 Clone Mouse IgG1

Format	Quantity	Applications	Product Code	Price
RPE-CY5	100 Tests	F	MCA1715C	T

WM15 Clone Mouse IgG1

Format	Quantity	Applications	Product Code	Price
Alexa Fluor® 488 NEW	100 Tests	F	MCA1270A488	T
Alexa Fluor® 647 NEW	100 Tests	F	MCA1270A647	T
APC NEW	100 Tests	F	MCA1270APC	T
Azide free	1.0mg	C, E, F, FN, IP	MCA1270XZ	Z
FITC	0.1mg	F	MCA1270F	N
Purified	0.2mg	C, E, F, IP	MCA1270	Q
RPE	100 Tests	F	MCA1270PE	T

CD14

MEM-18 Clone Mouse IgG1

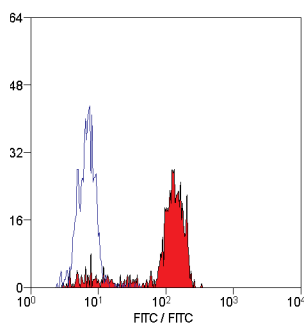
Format	Quantity	Applications	Product Code	Price
FITC	0.1mg	F	MCA2185F	N
Purified	0.2mg	E, F, IP, WB*	MCA2185	Q
RPE	100 Tests	F	MCA2185PE	T

TÜK4 Clone Mouse IgG2a

Format	Quantity	Applications	Product Code	Price
FITC	100 Tests	F	MCA1568F	N
RPE	100 Tests	F	MCA1568PE	T
RPE-CY5	100 Tests	F	MCA1568C	T

UCHM1 Clone Mouse IgG2a

Format	Quantity	Applications	Product Code	Price
Alexa Fluor® 647 NEW	100 Tests	F	MCA596A647	T
APC NEW	100 Tests	F	MCA596APC	T
Azide free	1.0mg	C, F, IP	MCA596XZ	Z
Biotin	100 Tests	F	MCA596B	N
FITC	0.1mg	F	MCA596F	N
Purified	0.1mg	C, F, IP	MCA596GA	J
Purified	0.2mg	C, F, IP	MCA596G	Q
RPE	100 Tests	F	MCA596PE	T

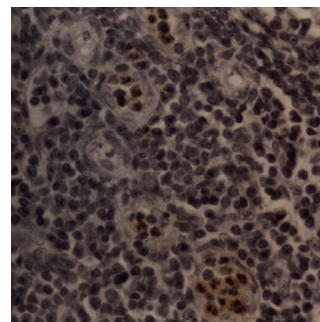


Staining of human peripheral blood monocytes with MOUSE ANTI HUMAN CD14:BIOTIN (MCA596B).

CD15

TG-1 Clone Mouse IgM

Format	Quantity	Applications	Product Code	Price
Alexa Fluor® 647 NEW	100 Tests	F	MCA1762A647	T
FITC	0.1mg	F	MCA1762F	N
Purified	0.02mg	C, F, P	MCA1762T	E
Purified	0.2mg	C, CT, F, IP, P	MCA1762	Q



CD15 - MCA1762 - human lymph node staining sinus histiocytes. Formalin fixed, paraffin processed tissue.

CD16 FcRIII

3G8 Clone Mouse IgG1

Format	Quantity	Applications	Product Code	Price
RPE	100 Tests	F	MCA1569PE	T
RPE-CY5	100 Tests	F	MCA1569C	T

LNK16 Clone Mouse IgG1

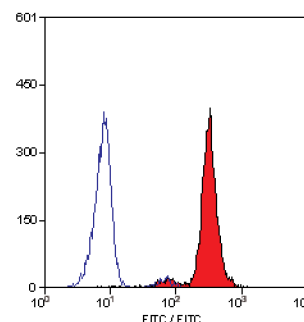
Format	Quantity	Applications	Product Code	Price
Alexa Fluor® 647 NEW	100 Tests	F	MCA1193A647	T
Azide free	1.0mg	F, FN, IP	MCA1193XZ	Z
Biotin	0.1mg	F	MCA1193B	N
FITC	0.1mg	F	MCA1193F	N
Purified	0.1mg	F, IP	MCA1193GA	J
Purified	0.2mg	F, IP	MCA1193	Q

YFC120.5 Clone Rat IgG2b

Format	Quantity	Applications	Product Code	Price
S/N	2.0ml	C, F	MCA617	Q

2H7 Clone Mouse IgG2a

Format	Quantity	Applications	Product Code	Price
S/N	0.1ml	P*	MCA1816T	E
S/N	1.0ml	P*	MCA1816	S



Staining of human peripheral blood granulocytes with MOUSE ANTI HUMAN CD16 (MCA1193).

Our simple quality promise - If a Serotec antibody does not perform as described on its datasheet we will replace it or credit you for the amount you paid for it.

Antibodies Recognising Leucocyte Antigens

CD16/CD56 NK CELLS

LNK16/MEM-188 Clone Mouse IgG1/IgG2a

Format	Quantity	Applications	Product Code	Price
FITC	0.1mg	F	MCA2074F	O

CD16b FcRIII B

1D3 Clone Mouse IgM

Format	Quantity	Applications	Product Code	Price
FITC	100 Tests	F	MCA1725F	S

CDw17

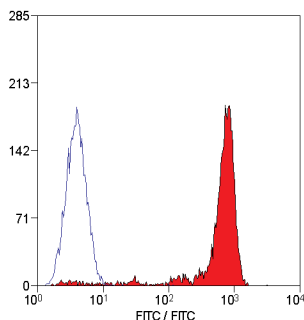
MEM74 Clone Mouse IgM

Format	Quantity	Applications	Product Code	Price
Purified	0.2mg	C, F, P	MCA721	S

CD18 INTEGRIN BETA 2 CHAIN

YFC118.3 Clone Rat IgG2b

Format	Quantity	Applications	Product Code	Price
Alexa Fluor® 647 NEW	100 Tests	F	MCA503A647	T
Azide free	1.0mg	C, F, IP	MCA503XZ	Z
Biotin	0.1mg	F	MCA503B	N
FITC	100 Tests	F	MCA503F	N
Purified	0.1mg	C, F, IP	MCA503GA	J
Purified	0.2mg	C, F, IP	MCA503	Q
Purified	20ug	C, F	MCA503T	C
RPE	100 Tests	F	MCA503PE	T

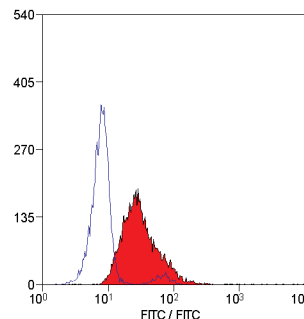


Staining of human peripheral blood lymphocytes with RAT ANTI HUMAN CD18 (MCA503).

CD18 (ACTIVATION EPI TOPE) INTEGRIN BETA 2 CHAIN

MEM148 Clone Mouse IgG1

Format	Quantity	Applications	Product Code	Price
Azide free	1.0mg	F, IP, WB	MCA2086XZ	Z
Biotin	0.1mg	F	MCA2086B	O
FITC	0.1mg	F	MCA2086F	O
Purified	0.2mg	F, IP, WB	MCA2086	Q
RPE	100 Tests	F	MCA2086PE	T



Staining of human peripheral blood granulocytes with MOUSE ANTI HUMAN CD18 (ACT EPI TOPE) (MCA2086).

The CD18 molecule (often known as the beta-2 integrin) is the common chain of the leucocyte integrins, forming heterodimers at the cell surface in association with the CD11 family of molecules. These heterodimers are of vital importance in the adhesion related processes involved in the inflammatory response.

Our monoclonal, clone MEM-148, (Product Code MCA2086) recognises a unique epitope of the CD18 molecule, which has a number of very interesting properties.

Following cellular activation, by various stimuli such as phorbol myristate acetate (PMA), opsonized zymosan or heat-aggregated IgG, the CD18 molecule is conformationally changed, resulting in increased affinity for its cellular ligands. Binding of the MEM-148 antibody following activation stabilises this activation related epitope.

It would appear that during activation a 65-70kD fragment of the CD18 molecule is released from intracellular stores. The fragment would seem to be produced by proteolytic cleavage from intact CD18, the process being inhibited by a number of protease inhibitors. It is expressed at the cell surface and is not associated with CD11.

Our MEM-148 antibody detects this CD18 fragment. Increased levels of binding of this antibody have been reported on the neutrophils obtained from patients who have recently undergone prostatectomy.

In flow cytometry this antibody binds at only low levels to resting cells, but binds strongly to activated cells. This may therefore prove to be a very useful marker of cellular activation.

References:

Drbal, K. *et al.* (2000) Human leucocytes contain a large pool of free forms of CD18. *Biochem. Biophys. Res. Commun.* 28:295-299.

Drbal, K. *et al.* (2001) A novel anti-CD18 mAb recognizes an activation-related epitope and induces a high-affinity conformation in leukocyte integrins. *Immunobiology* 203:687-698.

Tan, S-T. *et al.* (2001) The N-terminal region and the mid-region complex of the integrin beta2 subunit. *J. Biol. Chem.* 276:36370-36376.

Drbal, K. *et al.* (2001) A proteolytically truncated form of free CD18, the common chain of leucocyte integrins, as a novel marker of activated myeloid cells. *Blood* 98:1561-1566.

Antibodies Recognising Leucocyte Antigens

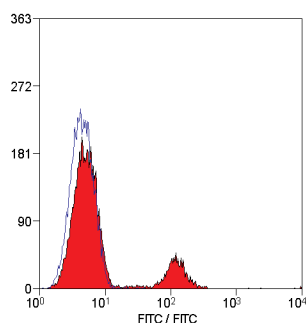
CD19

LT19 Clone Mouse IgG1

Format	Quantity	Applications	Product Code	Price
Alexa Fluor® 488 NEW	100 Tests	F	MCA1940A488	T
Alexa Fluor® 647 NEW	100 Tests	F	MCA1940A647	T
Azide free	1.0mg	C, F, IP	MCA1940XZ	Z
Biotin	0.1mg	F	MCA1940B	N
FITC	0.1mg	F	MCA1940F	N
Purified	0.1mg	C, F, IP	MCA1940GA	J
Purified	0.2mg	C, F, IP	MCA1940	Q
RPE	100 Tests	F	MCA1940PE	T

SJ25-C1 Clone Mouse IgG1

Format	Quantity	Applications	Product Code	Price
PE-TR	50 Tests	F	MCA1235PETR	Q
RPE-CY5	100 Tests	F	MCA1235C	T



Staining of human peripheral blood lymphocytes with MOUSE ANTI HUMAN CD19 (MCA1940).

CD20 LOCUS LINK ID 931

Goat Polyclonal

Format	Quantity	Applications	Product Code	Price
Purified	0.1mg	WB	AHP699	T

2H7 Clone Mouse IgG2b

Format	Quantity	Applications	Product Code	Price
Alexa Fluor® 405 NEW	100 Tests	F	MCA1710A405	X
Alexa Fluor® 488 NEW	100 Tests	F	MCA1710A488	T
Alexa Fluor® 647 NEW	100 Tests	F	MCA1710A647	T
APC NEW	100 Tests	F	MCA1710APC	T
Azide free	1.0mg	C, F	MCA1710XZ	Z
Biotin	0.1mg	F	MCA1710B	N
FITC	0.1mg	F	MCA1710F	N
Purified	0.1mg	C, F	MCA1710GA	J
Purified	0.2mg	C, F	MCA1710	Q
RPE	100 Tests	F	MCA1710PE	T

7D1 Clone Mouse IgG1

Format	Quantity	Applications	Product Code	Price
S/N	1.0ml	C, P*, WB	MCA1807	U

AT80 Clone Mouse IgG1

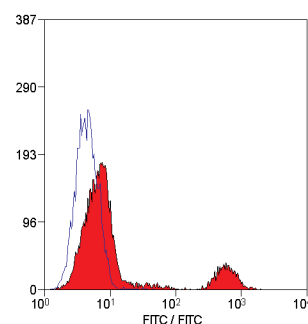
Format	Quantity	Applications	Product Code	Price
FITC	0.1mg	F	MCA1822F	N
Purified	0.2mg	F, IP	MCA1822	Q

H417 Clone Mouse IgG3

Format	Quantity	Applications	Product Code	Price
RPE-CY5	100 Tests	F	MCA1716C	T

L26 Clone Mouse IgG2a

Format	Quantity	Applications	Product Code	Price
Concentrated	0.1ml	C, P	MCA1915T	E
Concentrated	1.0ml	C, P	MCA1915	S
Ready to use	1.0ml	C, P	MCA1915HT	C
Ready to use	6.0ml	C, P	MCA1915H	N



Staining of human peripheral blood lymphocytes with MOUSE ANTI HUMAN CD20 (MCA1710).

Our simple quality promise - If a Serotec antibody does not perform as described on its datasheet we will replace it or credit you for the amount you paid for it.

Antibodies Recognising Leucocyte Antigens

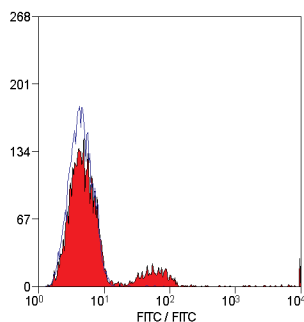
CD21 CR2

2G9 Clone Mouse IgG2a

Format	Quantity	Applications	Product Code	Price
S/N	0.1ml	C, P*	MCA1808T	E
S/N	1.0ml	C, P*	MCA1808	U

LB21 Clone Mouse IgG1

Format	Quantity	Applications	Product Code	Price
FITC	0.1mg	F	MCA1195F	N
Purified	200 Tests	C, F, IP	MCA1195	Q
RPE	100 Tests	F	MCA1195PE	T



Staining of human peripheral blood lymphocytes with MOUSE ANTI HUMAN CD21 (MCA1195).

CD22 BL-CAM

FPC1 Clone Mouse IgG1

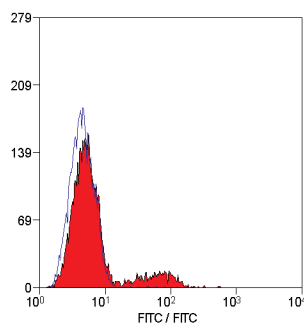
Format	Quantity	Applications	Product Code	Price
S/N	0.1ml	P*	MCA1809T	E
S/N	1.0ml	P*	MCA1809	X

Mc64-12 Clone Mouse IgG1

Format	Quantity	Applications	Product Code	Price
Biotin	0.1mg	F	MCA1380B	N
FITC	0.1mg	F	MCA1380F	N
Purified	0.2mg	C, F, IP	MCA1380	Q
RPE	100 Tests	F	MCA1380PE	T

RFB-4 Clone Mouse IgG1

Format	Quantity	Applications	Product Code	Price
FITC	100 Tests	F	MCA553F	N
RPE-CY5	100 Tests	F	MCA553C	T
S/N	200 Tests	F	MCA553	Q



Staining of human peripheral blood lymphocytes with MOUSE ANTI HUMAN CD22 (MCA553).

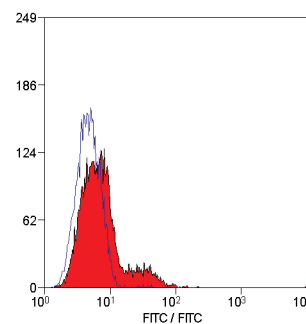
CD23 FcεRII

1B12 Clone Mouse IgG1

Format	Quantity	Applications	Product Code	Price
S/N	0.1ml	C, F, P*	MCA1810T	E
S/N	1.0ml	C, F, P*	MCA1810	Z

D3.6 Clone Mouse IgG2a

Format	Quantity	Applications	Product Code	Price
Alexa Fluor® 647 NEW	100 Tests	F	MCA1931A647	T
Azide free	1.0mg	F	MCA1931XZ	Z
Biotin	0.1mg	F	MCA1931B	N
FITC	0.1mg	F	MCA1931F	N
Purified	0.2mg	F	MCA1931	Q
RPE	100 Tests	F	MCA1931PE	T



Staining of human peripheral blood lymphocytes with MOUSE ANTI HUMAN CD23 (MCA1931).

CD24

SN3 Clone Mouse IgG1

Format	Quantity	Applications	Product Code	Price
Azide free	1.0mg	C, F	MCA1379XZ	Z
FITC	0.1mg	F	MCA1379F	N
Purified	0.1mg	C, F	MCA1379GA	J
Purified	0.2mg	C, F	MCA1379	Q
RPE	100 Tests	F	MCA1379PE	T

CD25 IL-2R ALPHA CHAIN

CD25-3G10 Clone Mouse IgG1

Format	Quantity	Applications	Product Code	Price
RPE-CY5	100 Tests	F	MCA1570C	T

MEM-181 Clone Mouse IgG1

Format	Quantity	Applications	Product Code	Price
Biotin	0.1mg	F	MCA2127B	N
FITC	0.1mg	F	MCA2127F	N
Purified	0.1mg	F, IP, WB*	MCA2127GA	J
Purified	0.2mg	F, IP, WB*	MCA2127	Q
RPE NEW	100 Tests	F	MCA2127PE	T

YTH906.9HL Clone Rat IgG2b

Format	Quantity	Applications	Product Code	Price
FITC	100 Tests	F	MCA350F	N
Purified	200 Tests	F	MCA350	Q

All Products are for research purposes only, not for therapeutic or diagnostic use.

www.serotec.com For contact details see back cover